



SCORED Clinical Trial

The Effects of Sotagliflozin on Cardiovascular and Renal Events in Patients with Type 2 Diabetes, Cardiovascular Risk Factors and Moderately Impaired Renal Function

This study investigates a new type of glucose lowering drug that works in the kidneys to allow more sugar to be lost in the urine and intestines to prevent absorption of sugars. It also causes modest weight loss. This is a 4 year study requiring approximately 2 visits per year.

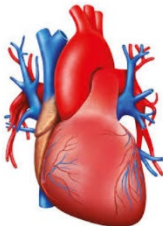
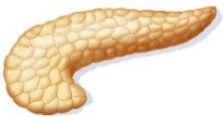
The University of Calgary Clinical Trials Unit is currently seeking individuals with Type 2 Diabetes to participate in this clinical trial.



Do you...

- Have Type 2 Diabetes with an HbA1c over 7%?
- Have a mild to moderate kidney problem?
- Have cardiovascular disease or risk factors for developing cardiovascular disease?

If so, you may qualify to participate in this study.



**To learn more or to participate in this study, please contact Amy Dunlop, RN
403-955-8119
adtekron@ucalgary.ca**