

# ClikSTAR™ Quick Guide

This is a quick reference guide only. Read the full instruction leaflet before using ClikSTAR™ for the first time. If you have any questions, ask your healthcare professional.

**How to take your injection** (See other side for how to change the cartridge.)

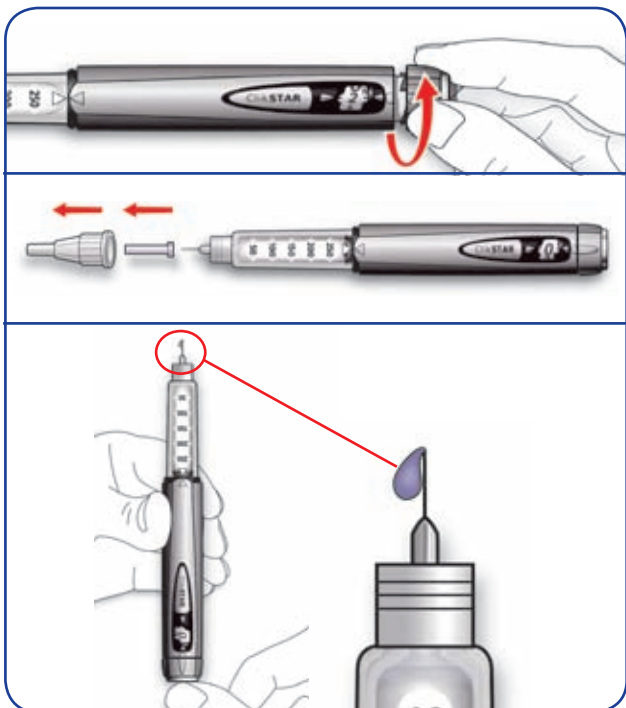
## 1 Check that you have the right insulin

## 2 Attach a new needle



## 3 Do a safety test

- Set a dose of 2 units.
- Take off both needle caps.
- Hold the pen with needle pointing up and press the button all the way in.
- Check that insulin comes out. If it does not, repeat the test.



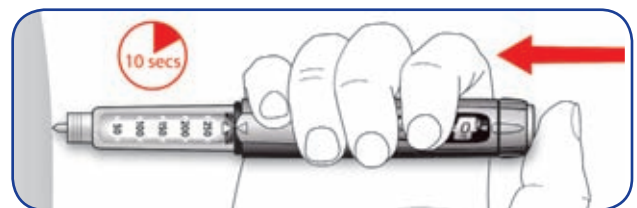
## 4 Select your dose

- Check that the dose window shows "0".
- Select your required dose (maximum of 80 units per injection).
- If you turn past your dose, you can just turn back again.



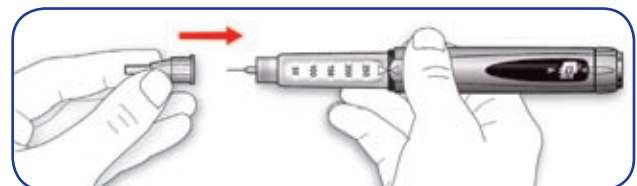
## 5 Inject your dose

- Insert the needle into the skin, as instructed by your healthcare professional.
- Press the injection button all the way in.
- Keep the button pressed and slowly count to 10.



## 6 Finish

- Withdraw the needle.
- Put the outer needle cap back on the needle and use it to unscrew the needle.
- Put the pen cap on.
- Dispose of the needle safely, for example, in a sharps container.



**24-HOUR SUPPORT**  
1.888.852.6887

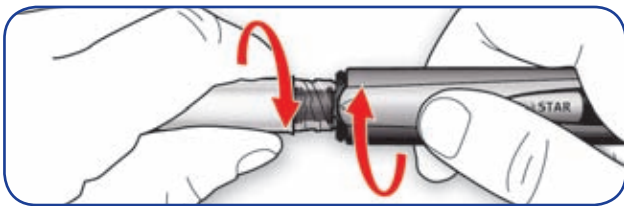
# ClikSTAR™ Quick Guide

This is a quick reference guide only. Read the full instruction leaflet before using ClikSTAR™ for the first time. If you have any questions, ask your healthcare professional.

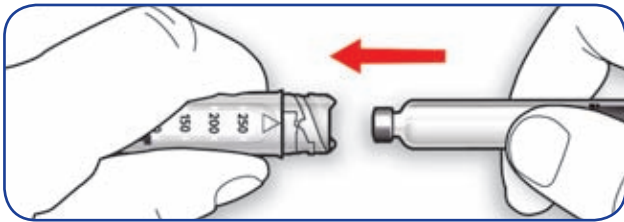
ClikSTAR™ can only be used with 3 mL (300 units) insulin cartridges (U-100) from sanofi-aventis.

**How to change the cartridge** (See other side for how to take your injection.)

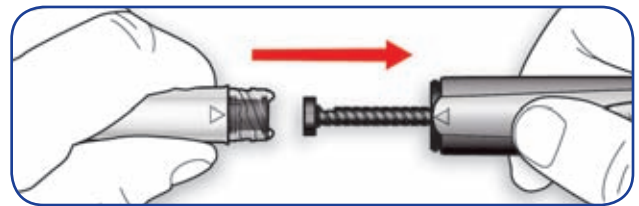
- 1** Unscrew the cartridge holder and remove the old cartridge



- 2** Check you have the right insulin  
Insert the new cartridge into the cartridge holder.




- 3** Screw the cartridge holder onto the pen, pushing back the plunger



- 4** The new cartridge is in place when it clicks and the arrows are aligned “▶◀”



  
**ClikSTAR™**

 **24-HOUR SUPPORT**  
1.888.852.6887

ClikSTAR™ is recommended for use with BD Ultra-Fine™ Pen Needles.

